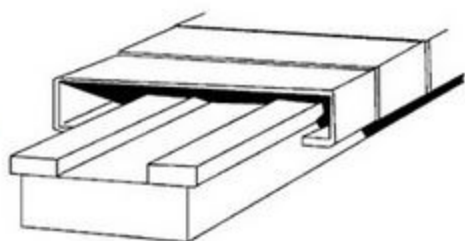


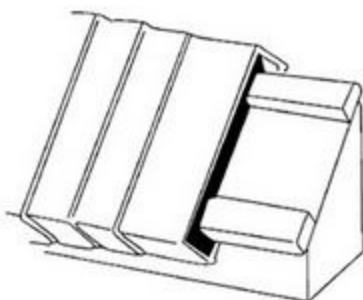
Shape 1.0



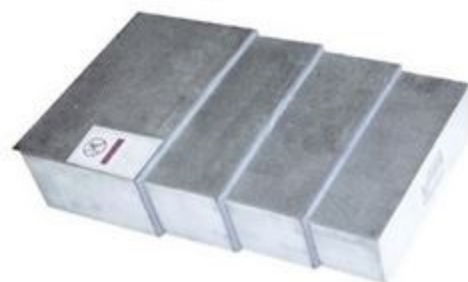
Shape 1.1



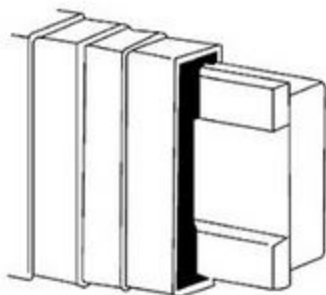
Shape 2.0



Shape 2.1



Shape 3.0



Shape 3.1



Shape 4.0



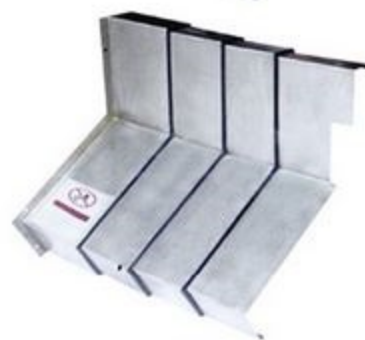
Shape 4.1



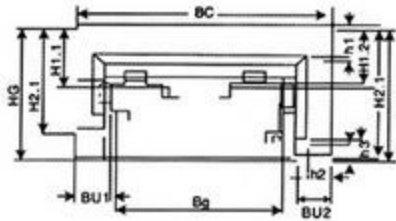
Shape 5.0



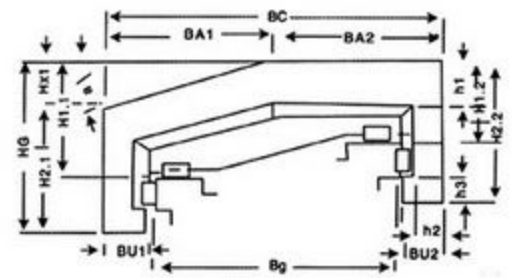
Shape 5.1



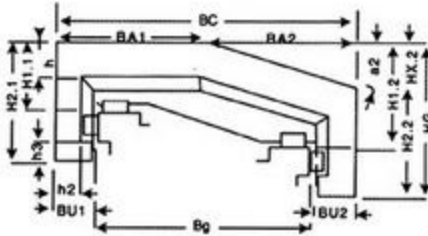
Shape 1.0



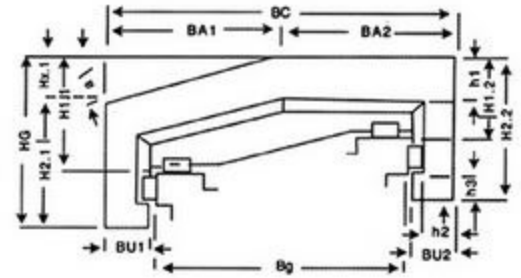
Shape 2.0



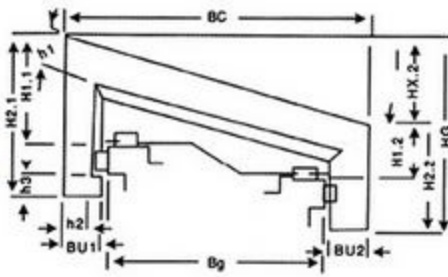
Shape 3.0



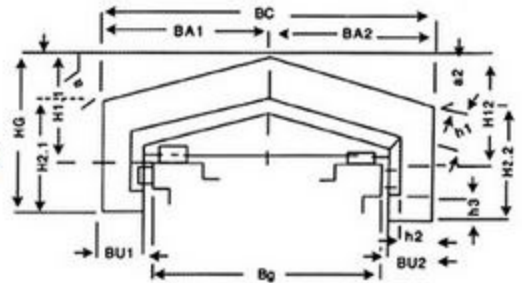
Shape 4.0



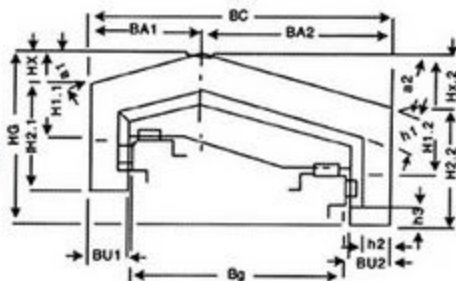
Shape 5.0



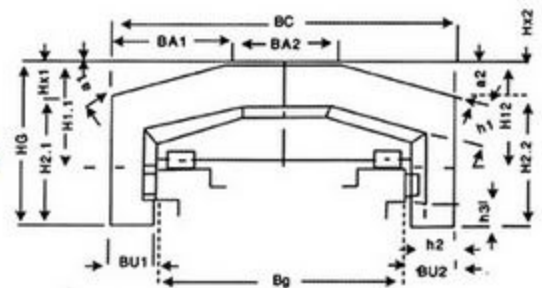
Shape 6.0



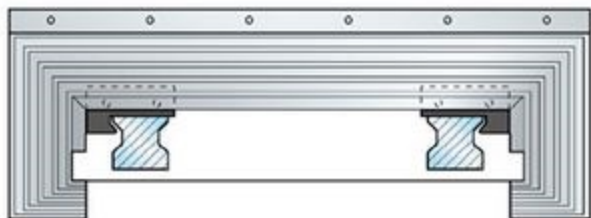
Shape 7.0



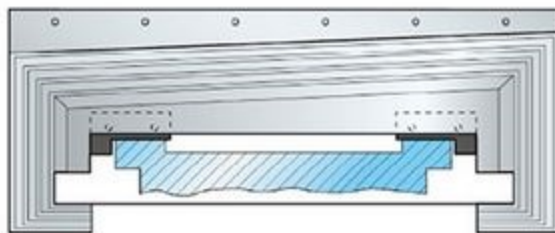
Shape 8.0



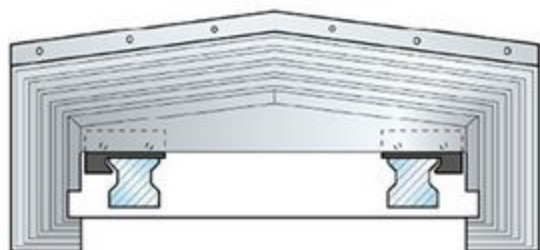
Structure1



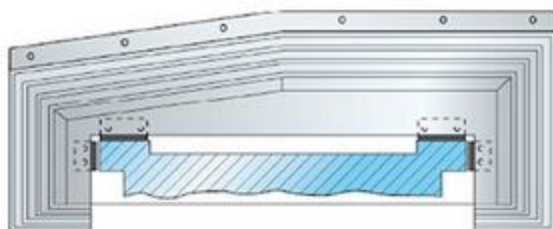
Structure2



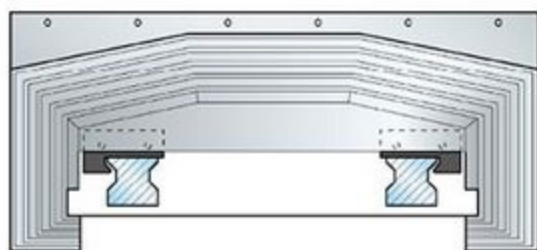
Structure3



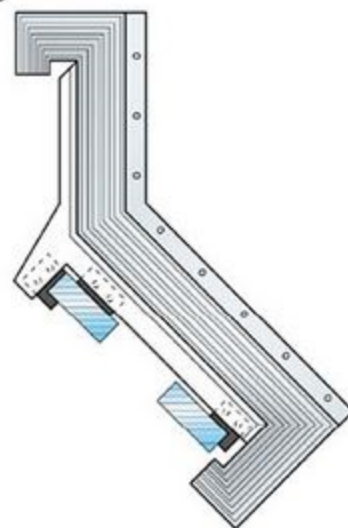
Structure4



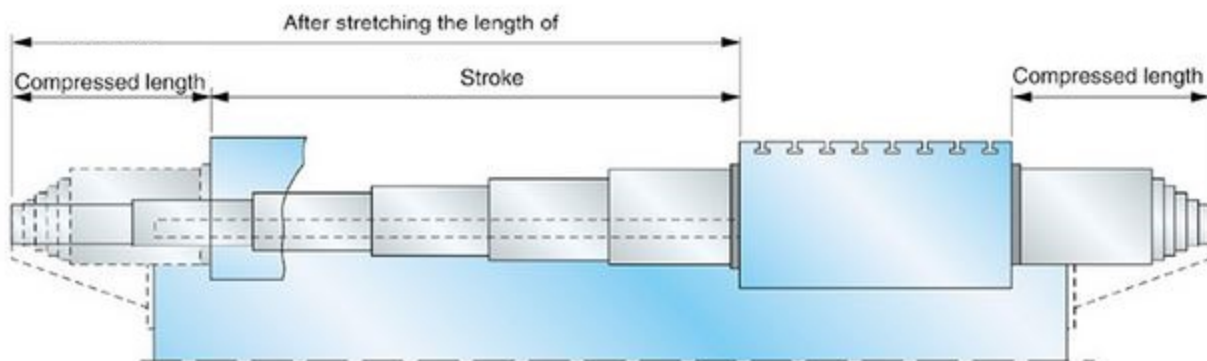
Structure5

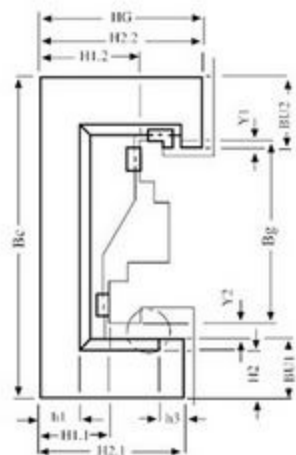
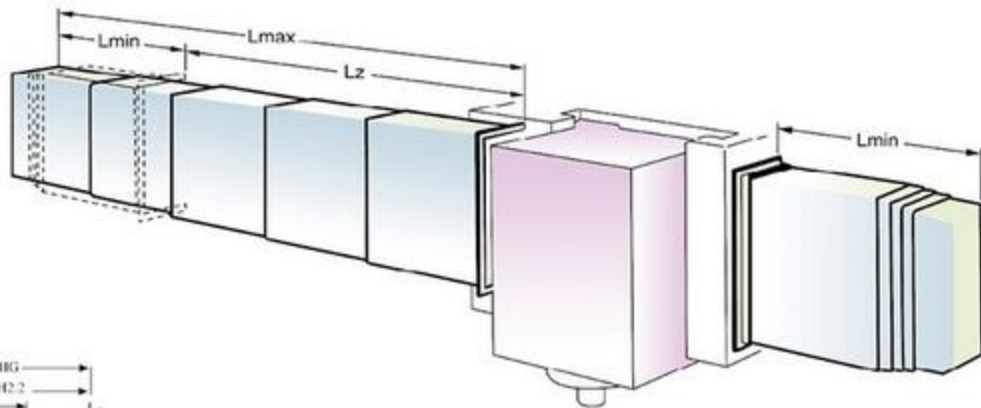


Structure6



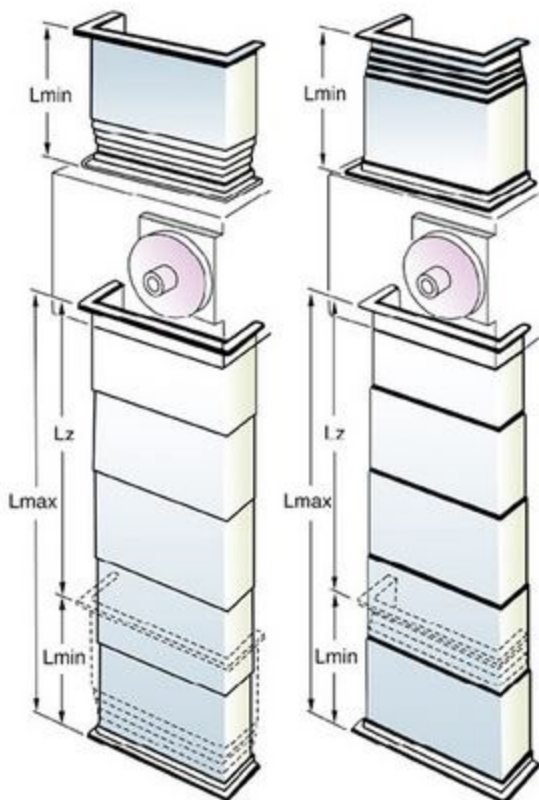
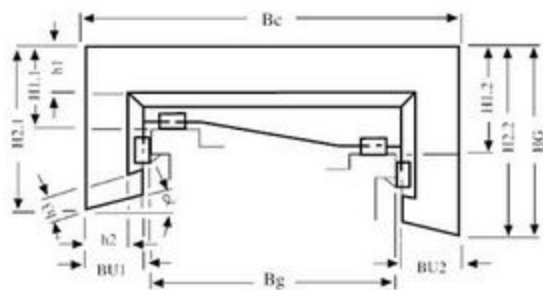
NOTE: The above diagram is only given the structure of steel telescopic guards in stainless steel several.



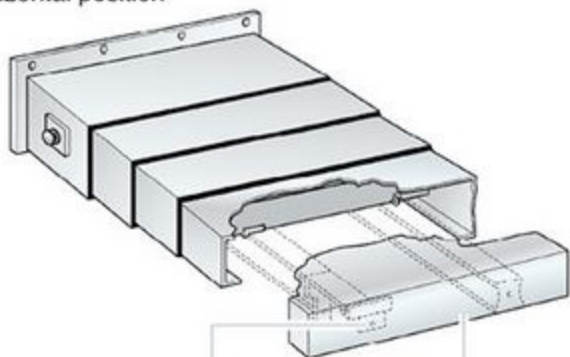


The appearance of the expansion cover is dependent on the overall dimensions of the machine, working conditions and the coolant liquid. It should be in tune with the whole machine unit.

If $Y1 < \text{equipment before } Y2$ and if $Y1 \nabla$ the equipment downstream of $Y2$, it should be the latest machine or repair the wheel edge in upper position.



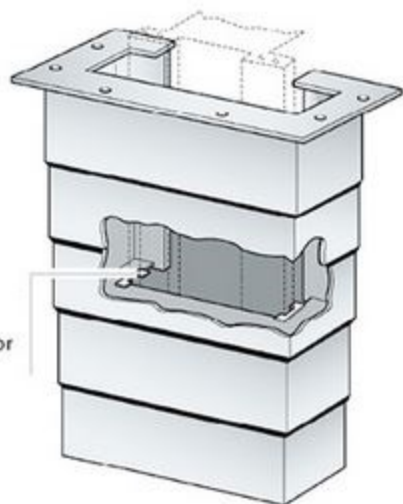
Horizontal position



Cover gathered on extensions or support flanges, if desired

Removable closing panel if desired

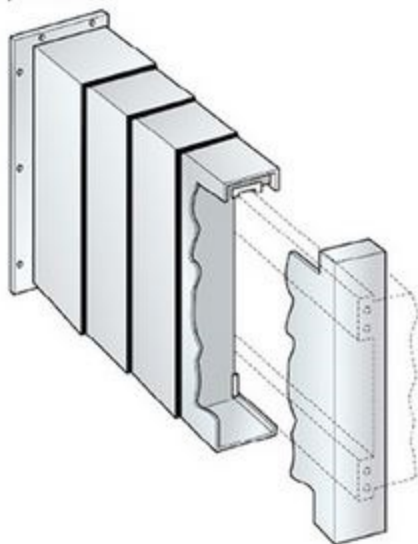
Vertical position



Profiled guides for secure fastening

Snap-on guides available upon request for rapid frontal installation

Transverse position



Transverse LATHE cover

