



135 years of experience - power transmission for your success

www.maedler.de

...we keep things moving

V-Belt Pulleys for Taper Bushes, 1 Groove

Material: cast iron EN-GJL200.

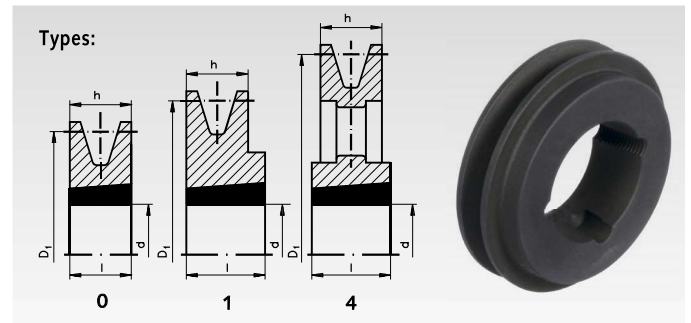
Taper V-belt pulleys similar to DIN 2211 or DIN 2217 matching narrow V-belts DIN 2215 und DIN 7753.

Design:

B = dished pulley

V = solid pulley

Ordering Details: e.g.: Product No. 151 106 00, V-Belt Pulley for Taper Clamping Bush, 1 Groove, Profile 10, Ø63 mm



Profile 10 and SPZ

| Product No. | Nominal Ø D ₁ mm | Design | Type | h mm | l mm | Relation of Hub to Rim | Bush* No. | Bore d mm | Weight approx. kg |
|-------------|--------------------------------|--------|------|---------|---------|----------------------------|--------------|--------------|----------------------|
| 151 106 00 | 63 | V | 1 | 16 | 22 | one-sided projecting 6 | 1108 | 9 - 28 | 0,30 |
| 151 107 00 | 71 | V | 1 | 16 | 22 | one-sided projecting 6 | 1108 | 9 - 28 | 0,40 |
| 151 108 00 | 80 | V | 1 | 16 | 25 | one-sided projecting 9 | 1210 | 10 - 32 | 0,50 |
| 151 109 00 | 90 | V | 1 | 16 | 25 | one-sided projecting 9 | 1210 | 10 - 32 | 0,70 |
| 151 110 00 | 100 | V | 1 | 16 | 25 | one-sided projecting 9 | 1210 | 10 - 32 | 0,80 |
| 151 111 00 | 112 | V | 1 | 16 | 25 | one-sided projecting 9 | 1610 | 12 - 42 | 1,00 |
| 151 112 00 | 125 | V | 1 | 16 | 25 | one-sided projecting 9 | 1610 | 12 - 42 | 1,20 |
| 151 114 00 | 140 | V | 1 | 16 | 25 | one-sided projecting 9 | 1610 | 12 - 42 | 1,60 |
| 151 116 00 | 160 | V | 1 | 16 | 25 | one-sided projecting 9 | 1610 | 12 - 42 | 2,10 |
| 151 118 00 | 180 | B | 4 | 16 | 25 | one-sided projecting 9 | 1610 | 12 - 42 | 1,80 |
| 151 120 00 | 200 | B | 4 | 16 | 32 | one-sided projecting 16 | 2012 | 12 - 50 | 2,50 |
| 151 122 00 | 224 | B | 4 | 16 | 32 | one-sided projecting 16 | 2012 | 12 - 50 | 2,80 |
| 151 125 00 | 250 | B | 4 | 16 | 32 | projecting on both sides 8 | 2012 | 12 - 50 | 3,30 |
| 151 128 00 | 280 | B | 4 | 16 | 32 | projecting on both sides 8 | 2012 | 12 - 50 | 3,80 |
| 151 131 00 | 315 | B | 4 | 16 | 32 | projecting on both sides 8 | 2012 | 12 - 50 | 4,80 |

Profile 13 and SPA

| Product No. | Nominal Ø D ₁ mm | Design | Type | h mm | l mm | Relation of Hub to Rim | Bush* No. | Bore d mm | Weight approx. kg |
|-------------|--------------------------------|--------|------|---------|---------|----------------------------|--------------|--------------|----------------------|
| 153 107 00 | 71 | V | 1 | 20 | 22 | one-sided projecting 2 | 1108 | 9 - 28 | 0,40 |
| 153 108 00 | 80 | V | 1 | 20 | 25 | one-sided projecting 5 | 1210 | 10 - 32 | 0,53 |
| 153 109 00 | 90 | V | 1 | 20 | 25 | one-sided projecting 5 | 1210 | 10 - 32 | 0,80 |
| 153 110 00 | 100 | V | 1 | 20 | 25 | one-sided projecting 5 | 1610 | 12 - 42 | 0,90 |
| 153 111 00 | 112 | V | 1 | 20 | 25 | one-sided projecting 5 | 1610 | 12 - 42 | 1,00 |
| 153 112 00 | 125 | V | 1 | 20 | 25 | one-sided projecting 5 | 1610 | 12 - 42 | 1,30 |
| 153 114 00 | 140 | V | 1 | 20 | 25 | one-sided projecting 5 | 1610 | 12 - 42 | 1,80 |
| 153 116 00 | 160 | V | 1 | 20 | 25 | one-sided projecting 5 | 1610 | 12 - 42 | 2,20 |
| 153 118 00 | 180 | B | 4 | 20 | 25 | one-sided projecting 5 | 1610 | 12 - 42 | 2,10 |
| 153 120 00 | 200 | B | 4 | 20 | 32 | one-sided projecting 12 | 2012 | 12 - 50 | 2,80 |
| 153 122 00 | 224 | B | 4 | 20 | 32 | one-sided projecting 12 | 2012 | 12 - 50 | 3,20 |
| 153 125 00 | 250 | B | 4 | 20 | 32 | projecting on both sides 6 | 2012 | 12 - 50 | 3,70 |
| 153 128 00 | 280 | B | 4 | 20 | 32 | one-sided projecting 12 | 2012 | 12 - 50 | 4,00 |
| 153 131 00 | 315 | B | 4 | 20 | 32 | one-sided projecting 12 | 2012 | 12 - 50 | 4,60 |

Profile 17 and SPB

| Product No. | Nominal Ø D ₁ mm | Design | Type | h mm | l mm | Relation of Hub to Rim | Bush* No. | Bore d mm | Weight approx. kg |
|-------------|--------------------------------|--------|------|---------|---------|------------------------------|--------------|--------------|----------------------|
| 155 110 00 | 100 | V | 0 | 25 | 25 | flush on both sides | 1610 | 12 - 42 | 0,90 |
| 155 111 00 | 112 | V | 0 | 25 | 25 | flush on both sides | 1610 | 12 - 42 | 1,10 |
| 155 112 00 | 125 | V | 0 | 25 | 25 | flush on both sides | 1610 | 12 - 42 | 1,50 |
| 155 114 00 | 140 | V | 0 | 25 | 25 | flush on both sides | 1610 | 12 - 42 | 2,00 |
| 155 116 00 | 160 | V | 0 | 25 | 25 | flush on both sides | 1610 | 12 - 42 | 2,80 |
| 155 118 00 | 180 | V | 4 | 25 | 25 | flush on both sides | 1610 | 12 - 42 | 3,70 |
| 155 120 00 | 200 | B | 4 | 25 | 32 | projecting on both sides 3.5 | 2012 | 12 - 50 | 4,10 |
| 155 122 00 | 224 | B | 4 | 25 | 32 | projecting on both sides 3.5 | 2012 | 12 - 50 | 4,60 |
| 155 125 00 | 250 | B | 4 | 25 | 32 | projecting on both sides 3.5 | 2012 | 12 - 50 | 5,60 |
| 155 128 00 | 280 | B | 4 | 25 | 32 | projecting on both sides 3.5 | 2012 | 12 - 50 | 8,00 |



Matching Taper bushes see page 186.
Mounting instructions see page 824.

*Other diameters or larger number of grooves
at short notice, on request.*

V-Belt Pulleys for Taper Bushes, 2 Grooves

Material: cast iron EN-GJL200.

Taper V-belt pulleys similar to DIN 2211 or DIN 2217 matching narrow V-belts DIN 2215 und DIN 7753.

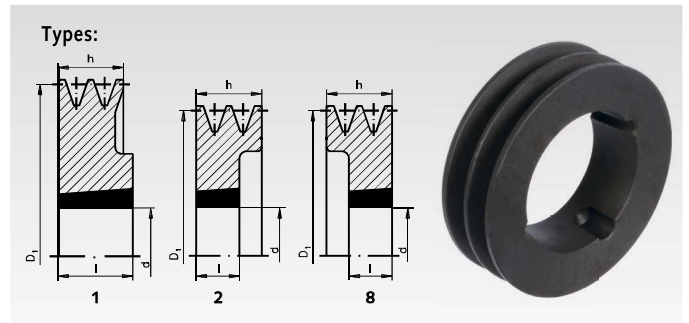
Design:

A = spoked pulley

B = dished pulley

V = solid pulley

Ordering Details: e.g.: Product No. 151 206 00, V-Belt Pulley for Taper Clamping Bush, 2 Grooves, Profile 10, Ø63 mm



Profile 10 and SPZ

| Product No. | Nominal Ø D ₁ mm | Design | Type | h mm | l mm | Relation of Hub to Rim | Bush* No. | Bore d mm | Weight approx. kg |
|-------------|--------------------------------|--------|------|---------|---------|----------------------------|--------------|--------------|----------------------|
| 151 206 00 | 63 | V | 8 | 28 | 22 | one-sided set back 6 | 1108 | 9 - 28 | 0,45 |
| 151 207 00 | 71 | V | 8 | 28 | 22 | one-sided set back 6 | 1108 | 9 - 28 | 0,48 |
| 151 208 00 | 80 | V | 8 | 28 | 25 | one-sided set back 3 | 1210 | 10 - 32 | 0,57 |
| 151 209 00 | 90 | V | 8 | 28 | 25 | one-sided set back 3 | 1610 | 12 - 42 | 0,67 |
| 151 210 00 | 100 | V | 8 | 28 | 25 | one-sided set back 3 | 1610 | 12 - 42 | 0,94 |
| 151 211 00 | 112 | V | 8 | 28 | 25 | one-sided set back 3 | 1610 | 12 - 42 | 1,30 |
| 151 212 00 | 125 | V | 8 | 28 | 25 | one-sided set back 3 | 1610 | 12 - 42 | 1,80 |
| 151 214 00 | 140 | V | 8 | 28 | 25 | one-sided set back 3 | 1610 | 12 - 42 | 2,40 |
| 151 216 00 | 160 | V | 1 | 28 | 32 | one-sided projecting 4 | 2012 | 12 - 50 | 3,10 |
| 151 218 00 | 180 | B | 1 | 28 | 32 | one-sided projecting 4 | 2012 | 12 - 50 | 2,70 |
| 151 220 00 | 200 | B | 1 | 28 | 32 | one-sided projecting 4 | 2012 | 12 - 50 | 3,10 |
| 151 222 00 | 224 | B | 1 | 28 | 32 | one-sided projecting 4 | 2012 | 12 - 50 | 3,40 |
| 151 225 00 | 250 | A | 1 | 28 | 32 | projecting on both sides 2 | 2012 | 12 - 50 | 3,90 |
| 151 228 00 | 280 | A | 1 | 28 | 32 | projecting on both sides 2 | 2012 | 12 - 50 | 4,90 |

Profile 13 and SPA

| Product No. | Nominal Ø D ₁ mm | Design | Type | h mm | l mm | Relation of Hub to Rim | Bush* No. | Bore d mm | Weight approx. kg |
|-------------|--------------------------------|--------|------|---------|---------|----------------------------|--------------|--------------|----------------------|
| 153 207 00 | 71 | V | 8 | 35 | 22 | one-sided set back 13 | 1108 | 9 - 28 | 0,55 |
| 153 208 00 | 80 | V | 8 | 35 | 25 | one-sided set back 10 | 1210 | 10 - 32 | 0,74 |
| 153 209 00 | 90 | V | 8 | 35 | 25 | one-sided set back 10 | 1610 | 12 - 42 | 0,90 |
| 153 210 00 | 100 | V | 8 | 35 | 25 | one-sided set back 10 | 1610 | 12 - 42 | 1,00 |
| 153 211 00 | 112 | V | 8 | 35 | 25 | one-sided set back 10 | 1610 | 12 - 42 | 1,40 |
| 153 212 00 | 125 | V | 8 | 35 | 25 | one-sided set back 10 | 1610 | 12 - 42 | 1,90 |
| 153 214 00 | 140 | V | 8 | 35 | 32 | one-sided set back 3 | 2012 | 12 - 50 | 2,60 |
| 153 216 00 | 160 | V | 8 | 35 | 32 | one-sided set back 3 | 2012 | 12 - 50 | 3,20 |
| 153 218 00 | 180 | B | 1 | 35 | 32 | set back on both sides 1.5 | 2012 | 12 - 50 | 5,20 |
| 153 220 00 | 200 | B | 1 | 35 | 45 | projecting on both sides 5 | 2517 | 15 - 65 | 4,70 |
| 153 222 00 | 224 | B | 1 | 35 | 45 | one-sided projecting 10 | 2517 | 15 - 65 | 5,30 |
| 153 225 00 | 250 | B | 1 | 35 | 45 | projecting on both sides 5 | 2517 | 15 - 65 | 5,80 |
| 153 228 00 | 280 | B | 1 | 35 | 45 | one-sided projecting 10 | 2517 | 15 - 65 | 6,50 |
| 153 231 00 | 315 | B | 1 | 35 | 45 | one-sided projecting 10 | 2517 | 15 - 65 | 7,60 |

Profile 17 and SPB

| Product No. | Nominal Ø D ₁ mm | Design | Type | h mm | l mm | Relation of Hub to Rim | Bore d max. mm | Bush* No. | Weight approx. kg |
|-------------|--------------------------------|--------|------|---------|---------|---------------------------|-------------------|--------------|----------------------|
| 155 210 00 | 100 | V | 8 | 44 | 25 | one-sided set back 19 | 1610 | 12 - 42 | 1,2 |
| 155 211 00 | 112 | V | 8 | 44 | 25 | one-sided set back 19 | 1610 | 12 - 42 | 1,5 |
| 155 212 00 | 125 | V | 2 | 44 | 32 | one-sided set back 12 | 2012 | 12 - 50 | 2,0 |
| 155 214 00 | 140 | V | 2 | 44 | 32 | one-sided set back 12 | 2012 | 12 - 50 | 2,7 |
| 155 216 00 | 160 | V | 8 | 44 | 32 | one-sided set back 12 | 2012 | 12 - 50 | 3,9 |
| 155 218 00 | 180 | V | 1 | 44 | 45 | one-sided projecting 1 | 2517 | 15 - 65 | 5,5 |
| 155 220 00 | 200 | V | 1 | 44 | 45 | one-sided projecting 1 | 2517 | 15 - 65 | 7,5 |
| 155 222 00 | 224 | B | 1 | 44 | 45 | one-sided projecting 1 | 2517 | 15 - 65 | 6,6 |
| 155 225 00 | 250 | B | 1 | 44 | 45 | one-sided projecting 1 | 2517 | 15 - 65 | 7,7 |
| 155 228 00 | 280 | B | 1 | 44 | 45 | one-sided projecting 1 | 2517 | 15 - 65 | 9,5 |
| 155 231 00 | 315 | B | 1 | 44 | 45 | one-sided projecting 1 | 2517 | 1 - 65 | 11,5 |



Matching Taper bushes see page 186.
Mounting instructions see page 824.

*Other diameters or larger number of grooves
at short notice, on request.*

V-Belt Pulleys for Taper Bushes, 3 Grooves

Material: cast iron EN-GJL200.

Taper V-belt pulleys similar to DIN 2211 or DIN 2217 matching narrow V-belts DIN 2215 und DIN 7753.

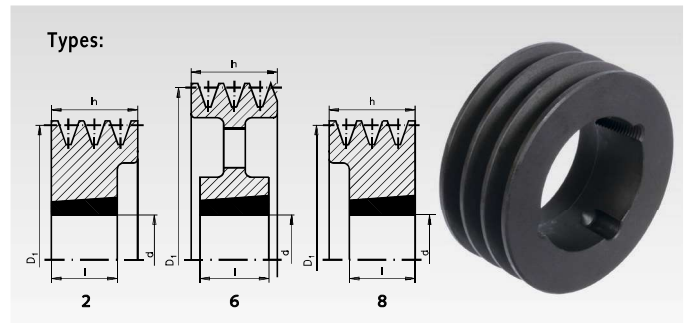
Design:

A = spoked pulley

B = dished pulley

V = solid pulley

Ordering Details: e.g.: Product No. 151 306 00, V-Belt Pulley for Taper Clamping Bush, 3 Grooves, Profile 10, Ø63 mm



Profile 10 and SPZ

| Product No. | Nominal Ø D ₁ mm | Design | Type | h mm | l mm | Relation of Hub to Rim | Bush* No. | Bore d mm | Weight approx. kg |
|-------------|--------------------------------|--------|------|---------|---------|------------------------------|--------------|--------------|----------------------|
| 151 306 00 | 63 | V | 8 | 40 | 22 | one-sided set back 18 | 1108 | 9 - 28 | 0,58 |
| 151 307 00 | 71 | V | 8 | 40 | 22 | one-sided set back 18 | 1108 | 9 - 28 | 0,64 |
| 151 308 00 | 80 | V | 8 | 40 | 25 | one-sided set back 15 | 1210 | 10 - 32 | 0,75 |
| 151 309 00 | 90 | V | 8 | 40 | 25 | one-sided set back 15 | 1610 | 12 - 42 | 0,88 |
| 151 310 00 | 100 | V | 8 | 40 | 25 | one-sided set back 15 | 1610 | 12 - 42 | 1,20 |
| 151 311 00 | 112 | V | 8 | 40 | 32 | one-sided set back 8 | 2012 | 12 - 50 | 1,40 |
| 151 312 00 | 125 | V | 2 | 40 | 32 | one-sided set back 8 | 2012 | 12 - 50 | 2,00 |
| 151 314 00 | 140 | V | 2 | 40 | 32 | one-sided set back 8 | 2012 | 12 - 50 | 2,70 |
| 151 316 00 | 160 | V | 2 | 40 | 32 | one-sided set back 8 | 2012 | 12 - 50 | 3,90 |
| 151 318 00 | 180 | B | 6 | 40 | 32 | one-sided set back 8 | 2012 | 12 - 50 | 3,20 |
| 151 320 00 | 200 | B | 6 | 40 | 32 | set back on both sides 4 | 2012 | 12 - 50 | 3,70 |
| 151 322 00 | 224 | B | 6 | 40 | 32 | set back on both sides 4 | 2012 | 12 - 50 | 4,20 |
| 151 325 00 | 250 | B | 6 | 40 | 32 | set back on both sides 4 | 2012 | 12 - 50 | 4,80 |
| 151 328 00 | 280 | A | 6 | 40 | 45 | projecting on both sides 2.5 | 2517 | 15 - 65 | 7,10 |
| 151 331 00 | 315 | A | 6 | 40 | 45 | projecting on both sides 2.5 | 2517 | 15 - 65 | 7,50 |

Profile 13 and SPA

| Product No. | Nominal Ø D ₁ mm | Design | Type | h mm | l mm | Relation of Hub to Rim | Bush* No. | Bore d mm | Weight approx. kg |
|-------------|--------------------------------|--------|------|---------|---------|------------------------------|--------------|--------------|----------------------|
| 153 308 00 | 80 | V | 8 | 50 | 25 | one-sided set back 25 | 1210 | 10 - 32 | 0,8 |
| 153 309 00 | 90 | V | 8 | 50 | 25 | one-sided set back 25 | 1610 | 12 - 42 | 1,0 |
| 153 310 00 | 100 | V | 2 | 50 | 25 | one-sided set back 25 | 1610 | 12 - 42 | 1,4 |
| 153 311 00 | 112 | V | 8 | 50 | 32 | one-sided set back 18 | 2012 | 12 - 50 | 1,6 |
| 153 312 00 | 125 | V | 2 | 50 | 32 | one-sided set back 18 | 2012 | 12 - 50 | 2,3 |
| 153 314 00 | 140 | V | 8 | 50 | 45 | one-sided set back 5 | 2517 | 15 - 65 | 2,9 |
| 153 316 00 | 160 | V | 8 | 50 | 45 | one-sided set back 5 | 2517 | 15 - 65 | 3,8 |
| 153 318 00 | 180 | V | 8 | 50 | 45 | one-sided set back 5 | 2517 | 15 - 65 | 6,1 |
| 153 320 00 | 200 | B | 6 | 50 | 45 | set back on both sides 2.5 | 2517 | 15 - 65 | 5,5 |
| 153 322 00 | 224 | B | 6 | 50 | 45 | set back on both sides 2.5 | 2517 | 15 - 65 | 6,2 |
| 153 325 00 | 250 | B | 6 | 50 | 45 | set back on both sides 2.5 | 2517 | 15 - 65 | 6,8 |
| 153 328 00 | 280 | B | 6 | 50 | 45 | set back on both sides 2.5 | 2517 | 15 - 65 | 7,6 |
| 153 331 00 | 315 | A | 6 | 50 | 51 | projecting on both sides 0.5 | 3020 | 20 - 75 | 11,0 |

Profile 17 and SPB

| Product No. | Nominal Ø D ₁ mm | Design | Type | h mm | l mm | Relation of Hub to Rim | Bore d max. mm | Bush* No. | Weight approx. kg |
|-------------|--------------------------------|--------|------|---------|---------|---------------------------|-------------------|--------------|----------------------|
| 155 310 00 | 100 | V | 8 | 63 | 25 | one-sided set back 38 | 1610 | 12 - 42 | 1,7 |
| 155 311 00 | 112 | V | 8 | 63 | 25 | one-sided set back 38 | 1610 | 12 - 42 | 2,0 |
| 155 312 00 | 125 | V | 2 | 63 | 32 | one-sided set back 31 | 2012 | 12 - 50 | 2,7 |
| 155 314 00 | 140 | V | 2 | 63 | 32 | one-sided set back 31 | 2012 | 12 - 50 | 3,5 |
| 155 316 00 | 160 | V | 2 | 63 | 45 | one-sided set back 18 | 2517 | 15 - 65 | 4,8 |
| 155 318 00 | 180 | V | 2 | 63 | 45 | one-sided set back 18 | 2517 | 15 - 65 | 6,6 |
| 155 320 00 | 200 | V | 2 | 63 | 45 | one-sided set back 18 | 2517 | 15 - 65 | 8,6 |
| 155 322 00 | 224 | B | 6 | 63 | 45 | one-sided set back 18 | 2517 | 15 - 65 | 8,1 |
| 155 325 00 | 250 | B | 6 | 63 | 51 | one-sided set back 12 | 3020 | 20 - 75 | 11,0 |
| 155 328 00 | 280 | B | 6 | 63 | 51 | set back on both sides 6 | 3020 | 20 - 75 | 13,0 |
| 155 331 00 | 315 | B | 6 | 63 | 51 | set back on both sides 6 | 3020 | 20 - 75 | 15,5 |



Matching Taper bushes see page 186.
Mounting instructions see page 824.

*Other diameters or larger number of grooves
at short notice, on request.*

Taper Bushes

Material: GG25.

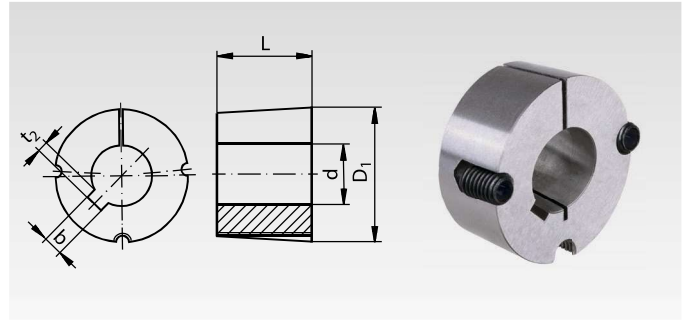
Bores ISO E8, feather keyways in accordance with DIN 6885/1.
Screws included in delivery.

Shaft tolerance +0.05/-0.125 mm.

Can be used with or without parallel key, depending on the required torque.

Other bush sizes and bores available at short notice (some in stock). Assembly instructions see page 824.

Ordering Details: e.g.: Product No. 622 501 09, Taper Bush 1008, 9 mm Bore



| Product No. | Taper bush No. | Bore d mm | Keyway b mm | t ₂ mm | L mm | D ₁ mm | Weight kg |
|--------------------------|----------------|-----------|-------------|-------------------|------|-------------------|-----------|
| 622 501 09 | 1008 | 9 | 3 | 1,4 | 22,3 | 35,2 | 0,175 |
| 622 501 10 | 1008 | 10 | 3 | 1,4 | 22,3 | 35,2 | 0,160 |
| 622 501 11 | 1008 | 11 | 4 | 1,8 | 22,3 | 35,2 | 0,140 |
| 622 501 12 | 1008 | 12 | 4 | 1,8 | 22,3 | 35,2 | 0,120 |
| 622 501 14 | 1008 | 14 | 5 | 2,3 | 22,3 | 35,2 | 0,118 |
| 622 501 15 | 1008 | 15 | 5 | 2,3 | 22,3 | 35,2 | 0,116 |
| 622 501 16 | 1008 | 16 | 5 | 2,3 | 22,3 | 35,2 | 0,112 |
| 622 501 18 | 1008 | 18 | 6 | 2,8 | 22,3 | 35,2 | 0,100 |
| 622 501 19 | 1008 | 19 | 6 | 2,8 | 22,3 | 35,2 | 0,098 |
| 622 501 20 | 1008 | 20 | 6 | 2,8 | 22,3 | 35,2 | 0,094 |
| 622 501 22 | 1008 | 22 | 6 | 2,8 | 22,3 | 35,2 | 0,080 |
| 622 501 24 ¹⁾ | 1008 | 24 | 8 | 1,3 ¹⁾ | 22,3 | 35,2 | 0,070 |
| 622 501 25 ¹⁾ | 1008 | 25 | 8 | 1,3 ¹⁾ | 22,3 | 35,2 | 0,068 |
| 622 502 09 | 1108 | 9 | 3 | 1,4 | 22,3 | 38,4 | 0,195 |
| 622 502 10 | 1108 | 10 | 3 | 1,4 | 22,3 | 38,4 | 0,180 |
| 622 502 11 | 1108 | 11 | 4 | 1,8 | 22,3 | 38,4 | 0,165 |
| 622 502 12 | 1108 | 12 | 4 | 1,8 | 22,3 | 38,4 | 0,154 |
| 622 502 14 | 1108 | 14 | 5 | 2,3 | 22,3 | 38,4 | 0,148 |
| 622 502 15 | 1108 | 15 | 5 | 2,3 | 22,3 | 38,4 | 0,145 |
| 622 502 16 | 1108 | 16 | 5 | 2,3 | 22,3 | 38,4 | 0,140 |
| 622 502 17 | 1108 | 17 | 5 | 2,3 | 22,3 | 38,4 | 0,136 |
| 622 502 18 | 1108 | 18 | 6 | 2,8 | 22,3 | 38,4 | 0,132 |
| 622 502 19 | 1108 | 19 | 6 | 2,8 | 22,3 | 38,4 | 0,126 |
| 622 502 20 | 1108 | 20 | 6 | 2,8 | 22,3 | 38,4 | 0,122 |
| 622 502 22 | 1108 | 22 | 6 | 2,8 | 22,3 | 38,4 | 0,112 |
| 622 502 24 | 1108 | 24 | 8 | 3,3 | 22,3 | 38,4 | 0,096 |
| 622 502 25 | 1108 | 25 | 8 | 3,3 | 22,3 | 38,4 | 0,092 |
| 622 502 28 ¹⁾ | 1108 | 28 | 8 | 1,3 ¹⁾ | 22,3 | 38,4 | 0,088 |
| 622 503 10 | 1210 | 10 | 3 | 1,4 | 25,4 | 47,5 | 0,282 |
| 622 503 11 | 1210 | 11 | 4 | 1,8 | 25,4 | 47,5 | 0,280 |
| 622 503 12 | 1210 | 12 | 4 | 1,8 | 25,4 | 47,5 | 0,278 |
| 622 503 14 | 1210 | 14 | 5 | 2,3 | 25,4 | 47,5 | 0,274 |
| 622 503 15 | 1210 | 15 | 5 | 2,3 | 25,4 | 47,5 | 0,267 |
| 622 503 16 | 1210 | 16 | 5 | 2,3 | 25,4 | 47,5 | 0,262 |
| 622 503 17 | 1210 | 17 | 5 | 2,3 | 25,4 | 47,5 | 0,257 |
| 622 503 18 | 1210 | 18 | 6 | 2,8 | 25,4 | 47,5 | 0,250 |
| 622 503 19 | 1210 | 19 | 6 | 2,8 | 25,4 | 47,5 | 0,244 |
| 622 503 20 | 1210 | 20 | 6 | 2,8 | 25,4 | 47,5 | 0,240 |
| 622 503 22 | 1210 | 22 | 6 | 2,8 | 25,4 | 47,5 | 0,224 |
| 622 503 24 | 1210 | 24 | 8 | 3,3 | 25,4 | 47,5 | 0,208 |
| 622 503 25 | 1210 | 25 | 8 | 3,3 | 25,4 | 47,5 | 0,198 |
| 622 503 28 | 1210 | 28 | 8 | 3,3 | 25,4 | 47,5 | 0,184 |
| 622 503 30 | 1210 | 30 | 8 | 3,3 | 25,4 | 47,5 | 0,168 |
| 622 503 32 | 1210 | 32 | 10 | 3,3 | 25,4 | 47,5 | 0,160 |
| 622 513 14 | 1215 | 14 | 5 | 2,3 | 38,1 | 47,5 | 0,380 |
| 622 513 16 | 1215 | 16 | 5 | 2,3 | 38,1 | 47,5 | 0,370 |
| 622 513 18 | 1215 | 18 | 6 | 2,8 | 38,1 | 47,5 | 0,350 |
| 622 513 19 | 1215 | 19 | 6 | 2,8 | 38,1 | 47,5 | 0,340 |
| 622 513 20 | 1215 | 20 | 6 | 2,8 | 38,1 | 47,5 | 0,335 |
| 622 513 22 | 1215 | 22 | 6 | 2,8 | 38,1 | 47,5 | 0,320 |
| 622 513 24 | 1215 | 24 | 8 | 3,3 | 38,1 | 47,5 | 0,290 |
| 622 513 25 | 1215 | 25 | 8 | 3,3 | 38,1 | 47,5 | 0,285 |
| 622 513 28 | 1215 | 28 | 8 | 3,3 | 38,1 | 47,5 | 0,260 |
| 622 513 30 | 1215 | 30 | 8 | 3,3 | 38,1 | 47,5 | 0,230 |
| 622 513 32 | 1215 | 32 | 10 | 3,3 | 38,1 | 47,5 | 0,200 |

| Product No. | Taper bush No. | Bore d mm | Keyway b mm | t ₂ mm | L mm | D ₁ mm | Weight kg |
|--------------------------|----------------|-----------|-------------|-------------------|------|-------------------|-----------|
| 622 504 12 | 1610 | 12 | 4 | 1,8 | 25,4 | 57 | 0,416 |
| 622 504 14 | 1610 | 14 | 5 | 2,3 | 25,4 | 57 | 0,412 |
| 622 504 15 | 1610 | 15 | 5 | 2,3 | 25,4 | 57 | 0,408 |
| 622 504 16 | 1610 | 16 | 5 | 2,3 | 25,4 | 57 | 0,402 |
| 622 504 17 | 1610 | 17 | 5 | 2,3 | 25,4 | 57 | 0,397 |
| 622 504 18 | 1610 | 18 | 6 | 2,8 | 25,4 | 57 | 0,390 |
| 622 504 19 | 1610 | 19 | 6 | 2,8 | 25,4 | 57 | 0,380 |
| 622 504 20 | 1610 | 20 | 6 | 2,8 | 25,4 | 57 | 0,373 |
| 622 504 22 | 1610 | 22 | 6 | 2,8 | 25,4 | 57 | 0,366 |
| 622 504 24 | 1610 | 24 | 8 | 3,3 | 25,4 | 57 | 0,356 |
| 622 504 25 | 1610 | 25 | 8 | 3,3 | 25,4 | 57 | 0,348 |
| 622 504 28 | 1610 | 28 | 8 | 3,3 | 25,4 | 57 | 0,324 |
| 622 504 30 | 1610 | 30 | 8 | 3,3 | 25,4 | 57 | 0,304 |
| 622 504 32 | 1610 | 32 | 10 | 3,3 | 25,4 | 57 | 0,280 |
| 622 504 35 | 1610 | 35 | 10 | 3,3 | 25,4 | 57 | 0,264 |
| 622 504 38 | 1610 | 38 | 10 | 3,3 | 25,4 | 57 | 0,240 |
| 622 504 40 | 1610 | 40 | 12 | 3,3 | 25,4 | 57 | 0,210 |
| 622 504 42 | 1610 | 42 | 12 | 3,3 | 25,4 | 57 | 0,200 |
| 622 508 12 | 1615 | 12 | 4 | 1,8 | 38,1 | 57 | 0,590 |
| 622 508 14 | 1615 | 14 | 5 | 2,3 | 38,1 | 57 | 0,580 |
| 622 508 15 | 1615 | 15 | 5 | 2,3 | 38,1 | 57 | 0,580 |
| 622 508 16 | 1615 | 16 | 5 | 2,3 | 38,1 | 57 | 0,580 |
| 622 508 18 | 1615 | 18 | 6 | 2,8 | 38,1 | 57 | 0,561 |
| 622 508 19 | 1615 | 19 | 6 | 2,8 | 38,1 | 57 | 0,557 |
| 622 508 20 | 1615 | 20 | 6 | 2,8 | 38,1 | 57 | 0,552 |
| 622 508 22 | 1615 | 22 | 6 | 2,8 | 38,1 | 57 | 0,540 |
| 622 508 24 | 1615 | 24 | 8 | 3,3 | 38,1 | 57 | 0,520 |
| 622 508 25 | 1615 | 25 | 8 | 3,3 | 38,1 | 57 | 0,510 |
| 622 508 28 | 1615 | 28 | 8 | 3,3 | 38,1 | 57 | 0,470 |
| 622 508 30 | 1615 | 30 | 8 | 3,3 | 38,1 | 57 | 0,446 |
| 622 508 32 | 1615 | 32 | 10 | 3,3 | 38,1 | 57 | 0,414 |
| 622 508 35 | 1615 | 35 | 10 | 3,3 | 38,1 | 57 | 0,380 |
| 622 508 38 | 1615 | 38 | 10 | 3,3 | 38,1 | 57 | 0,346 |
| 622 508 40 | 1615 | 40 | 12 | 3,3 | 38,1 | 57 | 0,340 |
| 622 508 42 ¹⁾ | 1615 | 42 | 12 | 2,2 ¹⁾ | 38,1 | 57 | 0,260 |
| 622 505 12 | 2012 | 12 | 4 | 1,8 | 31,8 | 70 | 0,810 |
| 622 505 14 | 2012 | 14 | 5 | 2,3 | 31,8 | 70 | 0,800 |
| 622 505 15 | 2012 | 15 | 5 | 2,3 | 31,8 | 70 | 0,785 |
| 622 505 16 | 2012 | 16 | 5 | 2,3 | 31,8 | 70 | 0,770 |
| 622 505 18 | 2012 | 18 | 6 | 2,8 | 31,8 | 70 | 0,762 |
| 622 505 19 | 2012 | 19 | 6 | 2,8 | 31,8 | 70 | 0,756 |
| 622 505 20 | 2012 | 20 | 6 | 2,8 | 31,8 | 70 | 0,750 |
| 622 505 22 | 2012 | 22 | 6 | 2,8 | 31,8 | 70 | 0,736 |
| 622 505 24 | 2012 | 24 | 8 | 3,3 | 31,8 | 70 | 0,724 |
| 622 505 25 | 2012 | 25 | 8 | 3,3 | 31,8 | 70 | 0,714 |
| 622 505 28 | 2012 | 28 | 8 | 3,3 | 31,8 | 70 | 0,684 |
| 622 505 30 | 2012 | 30 | 8 | 3,3 | 31,8 | 70 | 0,658 |
| 622 505 32 | 2012 | 32 | 10 | 3,3 | 31,8 | 70 | 0,630 |
| 622 505 35 | 2012 | 35 | 10 | 3,3 | 31,8 | 70 | 0,604 |
| 622 505 38 | 2012 | 38 | 10 | 3,3 | 31,8 | 70 | 0,566 |
| 622 505 40 | 2012 | 40 | 12 | 3,3 | 31,8 | 70 | 0,538 |
| 622 505 42 | 2012 | 42 | 12 | 3,3 | 31,8 | 70 | 0,510 |
| 622 505 45 | 2012 | 45 | 14 | 3,8 | 31,8 | 70 | 0,460 |
| 622 505 48 | 2012 | 48 | 14 | 3,8 | 31,8 | 70 | 0,404 |
| 622 505 50 | 2012 | 50 | 14 | 3,8 | 31,8 | 70 | 0,372 |

¹⁾ With flat keyway.

Taper Bushes

Material: GG25.

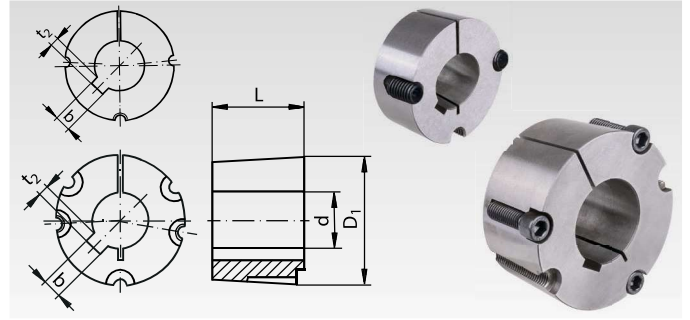
Bores ISO E8, feather keyways in accordance with DIN 6885/1. Screws included in delivery. From size 3525 with three screws.

Shaft tolerance +0.05/-0.125 mm.

Can be used with or without parallel key, depending on the required torque.

Other bush sizes and bores available at short notice (some in stock). Assembly instructions see page 824.

Ordering Details: e.g.: Product No. 622 506 15, Taper Bush 2517, 15 mm Bore



| Product No. | Taper bush No. | Bore d mm | Keyway b mm | t ₂ mm | L mm | D ₁ mm | Weight kg |
|--------------------------|----------------|-----------|-------------|-------------------|------|-------------------|-----------|
| 622 506 15 | 2517 | 15 | 5 | 2,3 | 44,5 | 85,5 | 1,85 |
| 622 506 16 | 2517 | 16 | 5 | 2,3 | 44,5 | 85,5 | 1,80 |
| 622 506 18 | 2517 | 18 | 6 | 2,8 | 44,5 | 85,5 | 1,70 |
| 622 506 19 | 2517 | 19 | 6 | 2,8 | 44,5 | 85,5 | 1,62 |
| 622 506 20 | 2517 | 20 | 6 | 2,8 | 44,5 | 85,5 | 1,60 |
| 622 506 22 | 2517 | 22 | 6 | 2,8 | 44,5 | 85,5 | 1,57 |
| 622 506 24 | 2517 | 24 | 8 | 3,3 | 44,5 | 85,5 | 1,57 |
| 622 506 25 | 2517 | 25 | 8 | 3,3 | 44,5 | 85,5 | 1,56 |
| 622 506 28 | 2517 | 28 | 8 | 3,3 | 44,5 | 85,5 | 1,52 |
| 622 506 30 | 2517 | 30 | 8 | 3,3 | 44,5 | 85,5 | 1,49 |
| 622 506 32 | 2517 | 32 | 10 | 3,3 | 44,5 | 85,5 | 1,45 |
| 622 506 35 | 2517 | 35 | 10 | 3,3 | 44,5 | 85,5 | 1,40 |
| 622 506 38 | 2517 | 38 | 10 | 3,3 | 44,5 | 85,5 | 1,35 |
| 622 506 40 | 2517 | 40 | 12 | 3,3 | 44,5 | 85,5 | 1,32 |
| 622 506 42 | 2517 | 42 | 12 | 3,3 | 44,5 | 85,5 | 1,27 |
| 622 506 45 | 2517 | 45 | 14 | 3,8 | 44,5 | 85,5 | 1,20 |
| 622 506 48 | 2517 | 48 | 14 | 3,8 | 44,5 | 85,5 | 1,13 |
| 622 506 50 | 2517 | 50 | 14 | 3,8 | 44,5 | 85,5 | 1,08 |
| 622 506 55 | 2517 | 55 | 16 | 4,3 | 44,5 | 85,5 | 0,96 |
| 622 506 60 | 2517 | 60 | 18 | 4,4 | 44,5 | 85,5 | 0,81 |
| 622 506 65 ¹⁾ | 2517 | 65 | 18 | 3,4 ¹⁾ | 44,5 | 85,5 | 0,65 |
| 622 507 20 | 3020 | 20 | 6 | 2,8 | 50,8 | 108 | 3,00 |
| 622 507 25 | 3020 | 25 | 8 | 3,3 | 50,8 | 108 | 2,91 |
| 622 507 28 | 3020 | 28 | 8 | 3,3 | 50,8 | 108 | 2,79 |
| 622 507 30 | 3020 | 30 | 8 | 3,3 | 50,8 | 108 | 2,84 |
| 622 507 32 | 3020 | 32 | 10 | 3,3 | 50,8 | 108 | 2,80 |
| 622 507 35 | 3020 | 35 | 10 | 3,3 | 50,8 | 108 | 2,75 |
| 622 507 38 | 3020 | 38 | 10 | 3,3 | 50,8 | 108 | 2,70 |
| 622 507 40 | 3020 | 40 | 12 | 3,3 | 50,8 | 108 | 2,64 |
| 622 507 42 | 3020 | 42 | 12 | 3,3 | 50,8 | 108 | 2,59 |
| 622 507 45 | 3020 | 45 | 14 | 3,8 | 50,8 | 108 | 2,52 |
| 622 507 48 | 3020 | 48 | 14 | 3,8 | 50,8 | 108 | 2,43 |
| 622 507 50 | 3020 | 50 | 14 | 3,8 | 50,8 | 108 | 2,37 |
| 622 507 55 | 3020 | 55 | 16 | 4,3 | 50,8 | 108 | 2,23 |
| 622 507 60 | 3020 | 60 | 18 | 4,4 | 50,8 | 108 | 2,00 |
| 622 507 65 | 3020 | 65 | 18 | 4,4 | 50,8 | 108 | 1,89 |
| 622 507 70 | 3020 | 70 | 20 | 4,9 | 50,8 | 108 | 1,70 |
| 622 507 75 | 3020 | 75 | 20 | 4,9 | 50,8 | 108 | 1,49 |
| 622 511 30 | 3030 | 30 | 8 | 3,3 | 76,2 | 108 | 4,05 |
| 622 511 35 | 3030 | 35 | 10 | 3,3 | 76,2 | 108 | 3,95 |
| 622 511 38 | 3030 | 38 | 10 | 3,3 | 76,2 | 108 | 3,86 |
| 622 511 40 | 3030 | 40 | 12 | 3,3 | 76,2 | 108 | 3,82 |
| 622 511 42 | 3030 | 42 | 12 | 3,3 | 76,2 | 108 | 3,69 |
| 622 511 45 | 3030 | 45 | 14 | 3,8 | 76,2 | 108 | 3,55 |
| 622 511 48 | 3030 | 48 | 14 | 3,8 | 76,2 | 108 | 3,45 |
| 622 511 50 | 3030 | 50 | 14 | 3,8 | 76,2 | 108 | 3,42 |
| 622 511 55 | 3030 | 55 | 16 | 4,3 | 76,2 | 108 | 3,18 |
| 622 511 60 | 3030 | 60 | 18 | 4,4 | 76,2 | 108 | 2,95 |
| 622 511 65 | 3030 | 65 | 18 | 4,4 | 76,2 | 108 | 2,68 |
| 622 511 70 | 3030 | 70 | 20 | 4,9 | 76,2 | 108 | 2,06 |
| 622 511 75 | 3030 | 75 | 20 | 4,9 | 76,2 | 108 | 1,64 |

¹⁾ With flat keyway.

| Product No. | Taper bush No. | Bore d mm | Keyway b mm | t ₂ mm | L mm | D ₁ mm | Weight kg |
|-------------|----------------|-----------|-------------|-------------------|-------|-------------------|-----------|
| 622 509 35 | 3525 | 35 | 10 | 3,3 | 63,5 | 127 | 4,91 |
| 622 509 38 | 3525 | 38 | 10 | 3,3 | 63,5 | 127 | 4,85 |
| 622 509 40 | 3525 | 40 | 12 | 3,3 | 63,5 | 127 | 4,80 |
| 622 509 42 | 3525 | 42 | 12 | 3,3 | 63,5 | 127 | 4,71 |
| 622 509 45 | 3525 | 45 | 14 | 3,8 | 63,5 | 127 | 4,67 |
| 622 509 48 | 3525 | 48 | 14 | 3,8 | 63,5 | 127 | 4,55 |
| 622 509 50 | 3525 | 50 | 14 | 3,8 | 63,5 | 127 | 4,44 |
| 622 509 55 | 3525 | 55 | 16 | 4,3 | 63,5 | 127 | 4,29 |
| 622 509 60 | 3525 | 60 | 18 | 4,4 | 63,5 | 127 | 4,05 |
| 622 509 65 | 3525 | 65 | 18 | 4,4 | 63,5 | 127 | 3,88 |
| 622 509 70 | 3525 | 70 | 20 | 4,9 | 63,5 | 127 | 3,58 |
| 622 509 75 | 3525 | 75 | 20 | 4,9 | 63,5 | 127 | 3,37 |
| 622 509 80 | 3525 | 80 | 22 | 5,4 | 63,5 | 127 | 3,05 |
| 622 509 85 | 3525 | 85 | 22 | 5,4 | 63,5 | 127 | 2,77 |
| 622 509 90 | 3525 | 90 | 25 | 5,4 | 63,5 | 127 | 2,47 |
| 622 510 30 | 3535 | 30 | 8 | 3,3 | 89,0 | 127 | 6,95 |
| 622 510 35 | 3535 | 35 | 10 | 3,3 | 89,0 | 127 | 6,70 |
| 622 510 38 | 3535 | 38 | 10 | 3,3 | 89,0 | 127 | 6,53 |
| 622 510 40 | 3535 | 40 | 12 | 3,3 | 89,0 | 127 | 6,48 |
| 622 510 42 | 3535 | 42 | 12 | 3,3 | 89,0 | 127 | 6,40 |
| 622 510 45 | 3535 | 45 | 14 | 3,8 | 89,0 | 127 | 6,25 |
| 622 510 48 | 3535 | 48 | 14 | 3,8 | 89,0 | 127 | 6,17 |
| 622 510 50 | 3535 | 50 | 14 | 3,8 | 89,0 | 127 | 6,05 |
| 622 510 55 | 3535 | 55 | 16 | 4,3 | 89,0 | 127 | 5,81 |
| 622 510 60 | 3535 | 60 | 18 | 4,4 | 89,0 | 127 | 5,50 |
| 622 510 65 | 3535 | 65 | 18 | 4,4 | 89,0 | 127 | 5,20 |
| 622 510 70 | 3535 | 70 | 20 | 4,9 | 89,0 | 127 | 4,88 |
| 622 510 75 | 3535 | 75 | 20 | 4,9 | 89,0 | 127 | 4,46 |
| 622 510 80 | 3535 | 80 | 22 | 5,4 | 89,0 | 127 | 4,08 |
| 622 510 85 | 3535 | 85 | 22 | 5,4 | 89,0 | 127 | 3,67 |
| 622 510 90 | 3535 | 90 | 25 | 5,4 | 89,0 | 127 | 3,21 |
| 622 512 40 | 4030 | 40 | 12 | 3,3 | 76,2 | 146 | 8,92 |
| 622 512 42 | 4030 | 42 | 12 | 3,3 | 76,2 | 146 | 8,80 |
| 622 512 45 | 4030 | 45 | 14 | 3,8 | 76,2 | 146 | 8,67 |
| 622 512 48 | 4030 | 48 | 14 | 3,8 | 76,2 | 146 | 8,49 |
| 622 512 50 | 4030 | 50 | 14 | 3,8 | 76,2 | 146 | 8,33 |
| 622 512 55 | 4030 | 55 | 16 | 4,3 | 76,2 | 146 | 8,15 |
| 622 512 60 | 4030 | 60 | 18 | 4,4 | 76,2 | 146 | 7,85 |
| 622 512 65 | 4030 | 65 | 18 | 4,4 | 76,2 | 146 | 7,60 |
| 622 512 70 | 4030 | 70 | 20 | 4,9 | 76,2 | 146 | 7,18 |
| 622 512 75 | 4030 | 75 | 20 | 4,9 | 76,2 | 146 | 6,84 |
| 622 512 80 | 4030 | 80 | 22 | 5,4 | 76,2 | 146 | 6,46 |
| 622 512 85 | 4030 | 85 | 22 | 5,4 | 76,2 | 146 | 6,06 |
| 622 512 90 | 4030 | 90 | 25 | 5,4 | 76,2 | 146 | 5,59 |
| 622 512 91 | 4030 | 100 | 28 | 6,4 | 76,2 | 146 | 4,63 |
| 622 514 40 | 4040 | 40 | 12 | 3,3 | 102,0 | 146 | 10,19 |
| 622 514 42 | 4040 | 42 | 12 | 3,3 | 102,0 | 146 | 10,03 |
| 622 514 45 | 4040 | 45 | 14 | 3,8 | 102,0 | 146 | 9,86 |
| 622 514 48 | 4040 | 48 | 14 | 3,8 | 102,0 | 146 | 9,66 |
| 622 514 50 | 4040 | 50 | 14 | 3,8 | 102,0 | 146 | 9,48 |
| 622 514 55 | 4040 | 55 | 16 | 4,3 | 102,0 | 146 | 9,27 |
| 622 514 60 | 4040 | 60 | 18 | 4,4 | 102,0 | 146 | 8,93 |
| 622 514 65 | 4040 | 65 | 18 | 4,4 | 102,0 | 146 | 8,65 |
| 622 514 70 | 4040 | 70 | 20 | 4,9 | 102,0 | 146 | 8,17 |
| 622 514 75 | 4040 | 75 | 20 | 4,9 | 102,0 | 146 | 7,78 |
| 622 514 80 | 4040 | 80 | 22 | 5,4 | 102,0 | 146 | 7,35 |
| 622 514 85 | 4040 | 85 | 22 | 5,4 | 102,0 | 146 | 6,89 |
| 622 514 90 | 4040 | 90 | 25 | 5,4 | 102,0 | 146 | 6,36 |
| 622 514 95 | 4040 | 95 | 25 | 5,4 | 102,0 | 146 | 5,94 |
| 622 514 91 | 4040 | 100 | 28 | 6,4 | 102,0 | 146 | 5,27 |

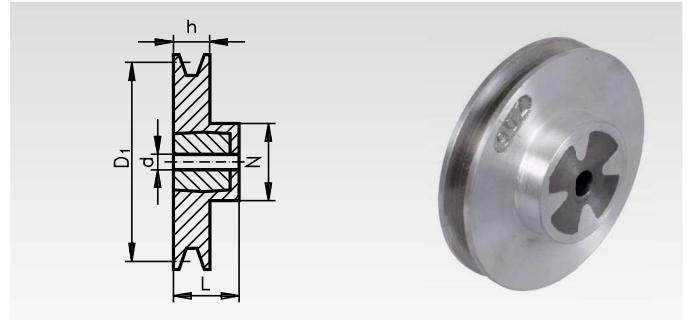
V-Belt Pulleys Made from a Special Light Alloy with Cast-Iron core, 1 Groove

Bimetal V-belt pulleys similar to DIN 2211 or DIN 2217 matching narrow V-belts DIN 2215 und DIN 7753.

V-belt pulleys with nominal diameters up to and including 250 mm are supplied as solid pulley, from 280 mm Ø as spoked pulley.

¹⁾ Can only be used with standard V-belt DIN 2215 .
* Without cast-iron core.

Ordering Details: e.g.: Product No. 150 101 00,
V-Belt Pulley Bi-metal, 1 Groove, 40/1/10



Profile Z (10) and SPZ with 1 Groove, Rim Width h 16 mm

| Product No. | Nominal Ø D ₁ mm | Pilot Hole d approx. mm | max. Bore mm | Hub Ø N approx. mm | Hub Length L approx. mm | Weight approx. kg |
|-------------|-----------------------------------|-------------------------------|-----------------|--------------------------|-------------------------------|----------------------|
| 150 102 00 | *50 ¹⁾ | - | 22 | 35 | 28 | 0,1 |
| 150 103 00 | *56 ¹⁾ | - | 22 | 35 | 28 | 0,1 |
| 150 106 00 | *63 | - | 22 | 35 | 28 | 0,1 |
| 150 107 00 | *71 | - | 25 | 40 | 28 | 0,2 |
| 150 108 00 | 80 | 10 | 28 | 48 | 28 | 0,4 |
| 150 109 00 | 90 | 10 | 28 | 48 | 28 | 0,5 |
| 150 110 00 | 100 | 10 | 28 | 48 | 28 | 0,5 |
| 150 111 00 | 112 | 10 | 28 | 48 | 28 | 0,5 |
| 150 112 00 | 125 | 10 | 28 | 48 | 28 | 0,5 |
| 150 114 00 | 140 | 10 | 28 | 48 | 28 | 0,6 |
| 150 116 00 | 160 | 12 | 35 | 60 | 32 | 0,9 |
| 150 118 00 | 180 | 12 | 35 | 60 | 32 | 1,0 |
| 150 120 00 | 200 | 12 | 35 | 60 | 32 | 1,1 |
| 150 122 00 | 224 | 12 | 35 | 60 | 32 | 1,2 |
| 150 125 00 | 250 | 12 | 35 | 60 | 32 | 1,5 |
| 150 128 00 | 280 | 12 | 35 | 60 | 40 | 1,7 |
| 150 131 00 | 315 | 14 | 40 | 65 | 40 | 2,0 |

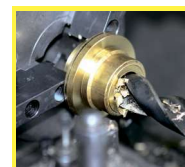
Profile A (13) and SPA with 1 Groove, Rim Width h 20 mm

| Product No. | Nominal Ø D ₁ mm | Pilot Hole d approx. mm | max. Bore mm | Hub Ø N approx. mm | Hub Length L approx. mm | Weight approx. kg |
|-------------|-----------------------------------|-------------------------------|-----------------|--------------------------|-------------------------------|----------------------|
| 152 102 00 | *50 ¹⁾ | - | 22 | 35 | 28 | 0,1 |
| 152 103 00 | *56 ¹⁾ | - | 22 | 35 | 28 | 0,15 |
| 152 106 00 | *63 | - | 25 | 40 | 28 | 0,15 |
| 152 107 00 | *71 | - | 25 | 40 | 28 | 0,2 |
| 152 108 00 | 80 | 10 | 28 | 48 | 28 | 0,4 |
| 152 109 00 | 90 | 10 | 28 | 48 | 28 | 0,5 |
| 152 110 00 | 100 | 10 | 28 | 48 | 28 | 0,5 |
| 152 111 00 | 112 | 10 | 28 | 48 | 28 | 0,5 |
| 152 112 00 | 125 | 10 | 35 | 60 | 32 | 0,7 |
| 152 114 00 | 140 | 10 | 35 | 60 | 32 | 0,8 |
| 152 116 00 | 160 | 12 | 35 | 60 | 40 | 1,0 |
| 152 118 00 | 180 | 12 | 40 | 65 | 40 | 1,3 |
| 152 120 00 | 200 | 12 | 40 | 65 | 40 | 1,4 |
| 152 122 00 | 224 | 12 | 40 | 65 | 40 | 1,5 |
| 152 125 00 | 250 | 12 | 45 | 75 | 50 | 2,2 |
| 152 128 00 | 280 | 12 | 45 | 75 | 50 | 2,4 |
| 152 131 00 | 315 | 12 | 45 | 75 | 50 | 2,8 |

V-Belt Pulleys GG in
Taper bushes-Type see
page 183.

Profile B (17) and SPB with 1 Groove, Rim Width h 25 mm

| Product No. | Nominal Ø D ₁ mm | Pilot Hole d approx. mm | max. Bore mm | Hub Ø N approx. mm | Hub Length L approx. mm | Weight approx. kg |
|-------------|-----------------------------------|-------------------------------|-----------------|--------------------------|-------------------------------|----------------------|
| 154 106 00 | *63 ¹⁾ | - | 25 | 40 | 32 | 0,2 |
| 154 107 00 | *71 | - | 25 | 40 | 32 | 0,25 |
| 154 108 00 | 80 | 10 | 35 | 60 | 32 | 0,5 |
| 154 109 00 | 90 | 10 | 35 | 60 | 32 | 0,6 |
| 154 110 00 | 100 | 12 | 35 | 60 | 32 | 0,7 |
| 154 111 00 | 112 | 12 | 35 | 60 | 32 | 0,7 |
| 154 112 00 | 125 | 12 | 35 | 60 | 32 | 0,8 |
| 154 114 00 | 140 | 12 | 35 | 60 | 32 | 0,9 |
| 154 116 00 | 160 | 12 | 35 | 60 | 40 | 1,1 |
| 154 118 00 | 180 | 12 | 40 | 65 | 40 | 1,4 |
| 154 120 00 | 200 | 12 | 40 | 65 | 40 | 1,5 |
| 154 122 00 | 224 | 12 | 40 | 65 | 45 | 1,9 |
| 154 125 00 | 250 | 12 | 45 | 75 | 45 | 2,3 |
| 154 128 00 | 280 | 14 | 45 | 75 | 45 | 2,4 |
| 154 131 00 | 315 | 20 | 45 | 75 | 45 | 2,7 |



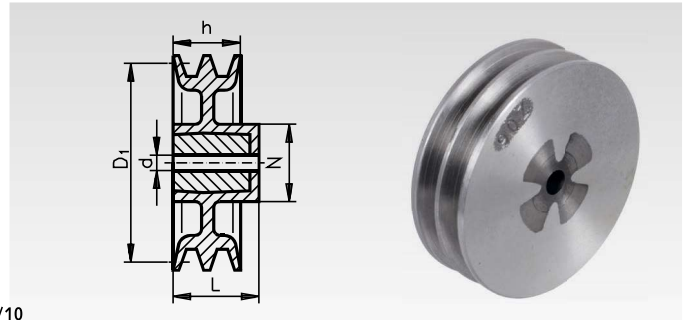
**Reworking within
24h-service possible.
Custom made parts
on request.**

V-Belt Pulleys Made from a Special Light Alloy with Cast-Iron core, 2 Grooves

Bimetal V-belt pulleys similar to DIN 2211 or DIN 2217 matching narrow V-belts DIN 2215 und DIN 7753.

V-belt pulleys with nominal diameters up to and including 250 mm are supplied as solid pulley, from 280 mm Ø as spoked pulley.

¹⁾ Can only be used with standard V-belt DIN 2215 .
* Without cast-iron core.



Ordering Details: e.g.: Product No. 150 202 00, V-Belt Pulley Bi-metal, 2 Grooves, 50/2/10

Profile Z (10) and SPZ with 2 Grooves, Rim Width h 28 mm

| Product No. | Nominal Ø D ₁ mm | Pilot Hole d approx. mm | max. Bore mm | Hub Ø N approx. mm | Hub Length L approx. mm | Weight approx. kg |
|-------------|-----------------------------------|-------------------------------|-----------------|--------------------------|-------------------------------|----------------------|
| 150 202 00 | *50 ¹⁾ | - | 22 | 35 | 35 | 0,15 |
| 150 203 00 | *56 ¹⁾ | - | 22 | 35 | 35 | 0,15 |
| 150 206 00 | *63 | - | 25 | 40 | 35 | 0,2 |
| 150 207 00 | *71 | - | 25 | 40 | 35 | 0,3 |
| 150 208 00 | 80 | 10 | 28 | - | 28 | 0,5 |
| 150 209 00 | 90 | 10 | 28 | - | 28 | 0,6 |
| 150 210 00 | 100 | 10 | 28 | - | 28 | 0,7 |
| 150 211 00 | 112 | 10 | 35 | 60 | 32 | 0,8 |
| 150 212 00 | 125 | 10 | 35 | 60 | 32 | 0,8 |
| 150 214 00 | 140 | 12 | 35 | 60 | 40 | 1,0 |
| 150 216 00 | 160 | 12 | 35 | 60 | 40 | 1,2 |
| 150 218 00 | 180 | 12 | 40 | 65 | 40 | 1,5 |
| 150 220 00 | 200 | 12 | 40 | 65 | 40 | 1,6 |
| 150 222 00 | 224 | 12 | 40 | 65 | 40 | 1,7 |
| 150 225 00 | 250 | 12 | 40 | 65 | 40 | 2,1 |
| 150 228 00 | 280 | 12 | 40 | 65 | 45 | 2,4 |
| 150 231 00 | 315 | 14 | 45 | 75 | 45 | 2,7 |

Profile A (13) and SPA with 2 Grooves, Rim Width h 35 mm

| Product No. | Nominal Ø D ₁ mm | Pilot Hole d approx. mm | max. Bore mm | Hub Ø N approx. mm | Hub Length L approx. mm | Weight approx. kg |
|-------------|-----------------------------------|-------------------------------|-----------------|--------------------------|-------------------------------|----------------------|
| 152 202 00 | *50 ¹⁾ | - | 22 | - | 35 | 0,15 |
| 152 203 00 | *56 ¹⁾ | - | 22 | - | 35 | 0,2 |
| 152 206 00 | *63 | - | 25 | 40 | 45 | 0,25 |
| 152 207 00 | *71 | - | 28 | 48 | 45 | 0,35 |
| 152 208 00 | 80 | 10 | 35 | 60 | 45 | 0,7 |
| 152 209 00 | 90 | 10 | 35 | 60 | 45 | 0,8 |
| 152 210 00 | 100 | 10 | 35 | 60 | 45 | 0,9 |
| 152 211 00 | 112 | 12 | 35 | 60 | 45 | 1,0 |
| 152 212 00 | 125 | 12 | 35 | 60 | 45 | 1,0 |
| 152 214 00 | 140 | 12 | 35 | 60 | 45 | 1,2 |
| 152 216 00 | 160 | 12 | 40 | 65 | 45 | 1,5 |
| 152 218 00 | 180 | 12 | 40 | 65 | 45 | 1,7 |
| 152 220 00 | 200 | 12 | 40 | 65 | 50 | 1,9 |
| 152 222 00 | 224 | 12 | 40 | 65 | 50 | 2,2 |
| 152 225 00 | 250 | 14 | 45 | 75 | 50 | 2,8 |
| 152 228 00 | 280 | 14 | 45 | 75 | 50 | 2,9 |
| 152 231 00 | 315 | 14 | 45 | 75 | 50 | 3,2 |

V-Belt Pulleys GG in Taper bushes-Type see page 183.

Profile B (17) and SPB with 2 Grooves, Rim Width h 44 mm

| Product No. | Nominal Ø D ₁ mm | Pilot Hole d approx. mm | max. Bore mm | Hub Ø N approx. mm | Hub Length L approx. mm | Weight approx. kg |
|-------------|-----------------------------------|-------------------------------|-----------------|--------------------------|-------------------------------|----------------------|
| 154 207 00 | *71 | - | 28 | 48 | 44 | 0,4 |
| 154 208 00 | 80 | 10 | 35 | 60 | 44 | 0,7 |
| 154 209 00 | 90 | 12 | 35 | 60 | 44 | 0,8 |
| 154 210 00 | 100 | 12 | 40 | 65 | 44 | 1,1 |
| 154 211 00 | 112 | 12 | 40 | 65 | 44 | 1,3 |
| 154 212 00 | 125 | 12 | 40 | 65 | 44 | 1,4 |
| 154 214 00 | 140 | 12 | 40 | 65 | 44 | 1,4 |
| 154 216 00 | 160 | 12 | 45 | 75 | 44 | 2,0 |
| 154 218 00 | 180 | 12 | 45 | 75 | 50 | 2,2 |
| 154 220 00 | 200 | 14 | 45 | 75 | 50 | 2,4 |
| 154 222 00 | 224 | 14 | 45 | 75 | 50 | 2,8 |
| 154 225 00 | 250 | 16 | 45 | 75 | 50 | 2,9 |
| 154 228 00 | 280 | 16 | 50 | 85 | 50 | 3,5 |
| 154 231 00 | 315 | 20 | 50 | 85 | 60 | 4,3 |



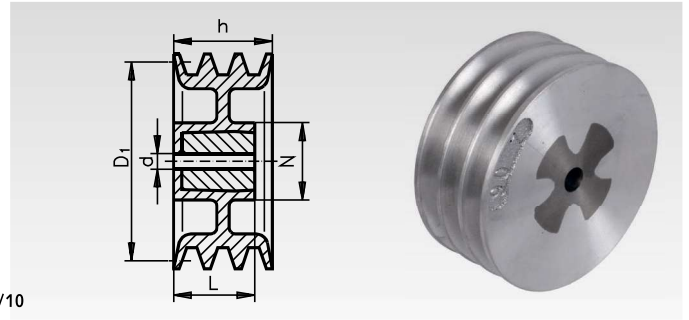
**Reworking within
24h-service possible.
Custom made parts
on request.**

V-Belt Pulley Made from a Special Light Alloy with Cast-Iron core, 3 Grooves

Bimetal V-belt pulleys similar to DIN 2211 or DIN 2217 matching narrow V-belts DIN 2215 und DIN 7753.

V-belt pulleys with nominal diameters up to and including 250 mm are supplied as solid pulley, from 280 mm Ø as spoked pulley.

¹⁾ Can only be used with standard V-belt DIN 2215 .
* Without cast-iron core.



Ordering Details: e.g.: Product No. 150 306 00, V-Belt Pulley Bi-metal, 3 Grooves, 63/3/10

Profile Z (10) and SPZ with 3 Grooves, Rim Width h 40 mm

| Product No. | Nominal Ø D ₁ mm | Pilot Hole d approx. mm | max. Bore mm | Hub Ø N approx. mm | Hub Length L approx. mm | Weight kg |
|-------------|-----------------------------------|-------------------------------|-----------------|--------------------------|-------------------------------|--------------|
| 150 306 00 | *63 | - | 25 | - | 40 | 0,3 |
| 150 307 00 | *71 | - | 30 | - | 40 | 0,4 |
| 150 308 00 | 80 | 10 | 35 | - | 40 | 0,8 |
| 150 309 00 | 90 | 10 | 35 | - | 40 | 0,9 |
| 150 310 00 | 100 | 10 | 35 | 60 | 40 | 1,0 |
| 150 311 00 | 112 | 12 | 35 | - | 40 | 1,2 |
| 150 312 00 | 125 | 12 | 35 | 60 | 40 | 1,1 |
| 150 314 00 | 140 | 12 | 40 | 65 | 40 | 1,5 |
| 150 316 00 | 160 | 12 | 40 | 65 | 45 | 1,5 |
| 150 318 00 | 180 | 12 | 45 | 75 | 45 | 2,0 |
| 150 320 00 | 200 | 14 | 45 | 75 | 45 | 2,2 |
| 150 322 00 | 224 | 14 | 45 | 75 | 45 | 2,4 |
| 150 325 00 | 250 | 14 | 45 | 75 | 45 | 2,7 |
| 150 328 00 | 280 | 14 | 45 | 75 | 50 | 3,0 |
| 150 331 00 | 315 | 14 | 45 | 75 | 50 | 4,0 |

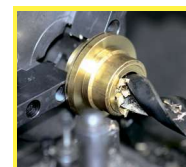
Profile A (13) and SPA with 3 Grooves, Rim Width h 50 mm

| Product No. | Nominal Ø D ₁ mm | Pilot Hole d approx. mm | max. Bore mm | Hub Ø N approx. mm | Hub Length L approx. mm | Weight kg |
|-------------|-----------------------------------|-------------------------------|-----------------|--------------------------|-------------------------------|--------------|
| 152 302 00 | *50 ¹⁾ | - | 22 | - | 50 | 0,2 |
| 152 303 00 | *56 ¹⁾ | - | 25 | - | 50 | 0,3 |
| 152 306 00 | *63 | - | 25 | - | 50 | 0,3 |
| 152 307 00 | *71 | - | 30 | - | 50 | 0,4 |
| 152 308 00 | 80 | 12 | 35 | - | 50 | 0,8 |
| 152 309 00 | 90 | 12 | 40 | - | 50 | 1,1 |
| 152 310 00 | 100 | 12 | 40 | - | 50 | 1,3 |
| 152 311 00 | 112 | 12 | 40 | - | 50 | 1,5 |
| 152 312 00 | 125 | 12 | 40 | 65 | 50 | 1,8 |
| 152 314 00 | 140 | 12 | 40 | 65 | 50 | 1,7 |
| 152 316 00 | 160 | 12 | 40 | 65 | 50 | 1,9 |
| 152 318 00 | 180 | 14 | 45 | 75 | 50 | 2,4 |
| 152 320 00 | 200 | 14 | 45 | 75 | 50 | 2,6 |
| 152 322 00 | 224 | 16 | 45 | 75 | 50 | 2,8 |
| 152 325 00 | 250 | 16 | 50 | 85 | 50 | 3,5 |
| 152 328 00 | 280 | 16 | 50 | 85 | 50 | 3,6 |
| 152 331 00 | 315 | 16 | 50 | 85 | 60 | 4,5 |

V-Belt Pulleys GG in
Taper bushes-Type see
page 183.

Profile B (17) and SPB with 3 Grooves, Rim Width h 63 mm

| Product No. | Nominal Ø D ₁ mm | Pilot Hole d approx. mm | max. Bore mm | Hub Ø N approx. mm | Hub Length L approx. mm | Weight kg |
|-------------|-----------------------------------|-------------------------------|-----------------|--------------------------|-------------------------------|--------------|
| 154 308 00 | 80 | 12 | 35 | - | 63 | 0,9 |
| 154 309 00 | 90 | 12 | 35 | - | 63 | 1,2 |
| 154 310 00 | 100 | 14 | 40 | - | 63 | 1,4 |
| 154 311 00 | 112 | 14 | 40 | - | 63 | 2,0 |
| 154 312 00 | 125 | 14 | 40 | - | 63 | 2,3 |
| 154 314 00 | 140 | 14 | 45 | - | 63 | 2,4 |
| 154 316 00 | 160 | 14 | 50 | 85 | 50 | 2,6 |
| 154 318 00 | 180 | 14 | 50 | 85 | 50 | 2,8 |
| 154 320 00 | 200 | 16 | 50 | 85 | 50 | 3,0 |
| 154 322 00 | 224 | 16 | 50 | 85 | 50 | 3,4 |
| 154 325 00 | 250 | 18 | 50 | 85 | 60 | 4,3 |
| 154 328 00 | 280 | 18 | 50 | 85 | 60 | 4,6 |
| 154 331 00 | 315 | 20 | 50 | 85 | 60 | 4,9 |



**Reworking within
24h-service possible.
Custom made parts
on request.**